

KUKUMINUATSH, TSHIMUSHIMINUATSH KIE USHKATSH AIMUN

- Kukuminuatsh, tshimushiminuatsh kie ne ushkatsh aimun nishtutakuan e uitakanitsh ka mishta-apatit uitamatun Tshe apatishishtatun ka Ka uashtenamatshetau tshe atusseshtakuau Uashteshkuau tipelitamun.
- Tshika nashekanu kukuminuatsh, tshimushiminuatsh utaimunuau kie ne ushkatsh aimun nashekanu.
- Umehi nukutakanu ka mishta-ishpitolikuatsh:
 - ✓ Pekuakamiulnu-tshishe-utshimau kie utipelimitishunuau;
 - ✓ Uelutishiun ka apitelitakau Pekuakamiulnuatsh, ne kie shutshelitakau peikutenu tapishkuatsh itelitamun, apitelitamun e uitsheutunuanuatsh ashitsh auassatsh, ka apitelimakanitau kukuminuatsh kie tshimushuminuatsh e tapishkuatsh itelitakanitsh kie apitelitakuan tshi nishtunakanitsh kie tshi ishpalitakanitsh uelutishiun kie Pekuakamiulnuatsh utilniunuau;
 - ✓ Ushutishiun ilnu-auass kie Ka shuelimat auass kie ilnuatsh ilnussihtsh (peikutenu kie Pekuakamiulnuatsh mishkanitsh uitishiun);
 - ✓ Ne ka inanuatsh auass apu nita tshika utsh pimutet e peikussit, usham taship tshika talu auelu, Ka shuelimat auass, utilnim kie kassinu Ilnuatsh.

**AIMUNA KA ATSHITASHUNASHTETSH 1
EISH NISHTUTAKUATSH AIMUN E NELUANUATSH**

- Ume aimun kau uitam^u nelueun eukuan ne ushkatsh utaimunuau. Pekuakamiulnuatsh kie ka nikanishtetsh ek^u tshitshue apitelitakuan.
- Ui tapuatamek kassinu ilnu-aimuna, nite tshika aimitanau ka atshitashunashtetsh 1 tipelitamun, ume tshitapatamuk ilnu-aimuna tshetshi uitishikueik e tapuetamek ka takuapekashtet :

Ilnu-auass (ilnu-auassatsh)	Ilnu-auass ¹⁸ itapipuneshit kie etatu ka auassiatuau Pekuakamiulnu e itapit
Ka nitautshinat auass (Ka nitautshinatau auassatsh)	issishuemakan auen ka pashikutishinat auass etshi uauitam utilniunuau kie utilnu-aitunuau. Ne pashikutishinat auass apu nite utinak Ka uashtenamatshetau, apu kie nite utinak nitetshe Upishtikuiiau-tshishe-utshimau ka tshishpeuatat auassa kie peikuan nitetshe kutak ilnu atusseutshuap
Ka shuelimat auass (Ka shuelimatau auassatsh)	issishuemakan auen ka mishta-shuelimat ilnu-auass kie mak e milu-tutuau utshiluemakan kie uilakanuatsh ka nitautshinat auass, utshiluemakan kie ukum, umushum, ukumisha, utussa, ushimikaun makie kutak ilnu ka shuelimakut ilnu-auass
Ka uitsheuat auass (Ka uitsheyatau auassatsh)	issishuemakan ka uitsheuat ilnu-auass auen ka milu-tutuau ilnu-auass tat ^u tshishik ^u etshi tapuetakanitsh tshi kanuelimakanit itsh uitshuahtsh. Ka uashtenamatshetau tshi milakanuatsh tshi aitutau kie Upishtikuiiau-tshishe-utshimau tipelimun makie kutak ilnu- atusseutshuap
Kaishpitelimakanitau	issishuemakan auenitshenatsh ka ishpitelimakanitau eukuan ne aimun ka utinakanit tshetshi ish uilakanitau Kaishpitelimakanitau
Kananakatshitat	issishuemakan auen kananakatshitat aimun ka utinakanit tshi uilakanitau Kananakatshitat
Kupaniesh	issishuemakan auen ka uitishiuet, ka uitsheuet kie ka apitelimuet. Ne aimun uilakanuatsh kassinu kupanieshatsh ka tatau tshe nashakau ume tipelitamun
Nikupaniem/nikupanieshkuem	issishuemakan Pekuakamiulnuatsh ka natuelimatau auass tshetshi kanuelimatau
Ka uashtenamatshetau	Ka nikanipitau uiluuau tshika atusseshtamuatsh ume tipelitamun

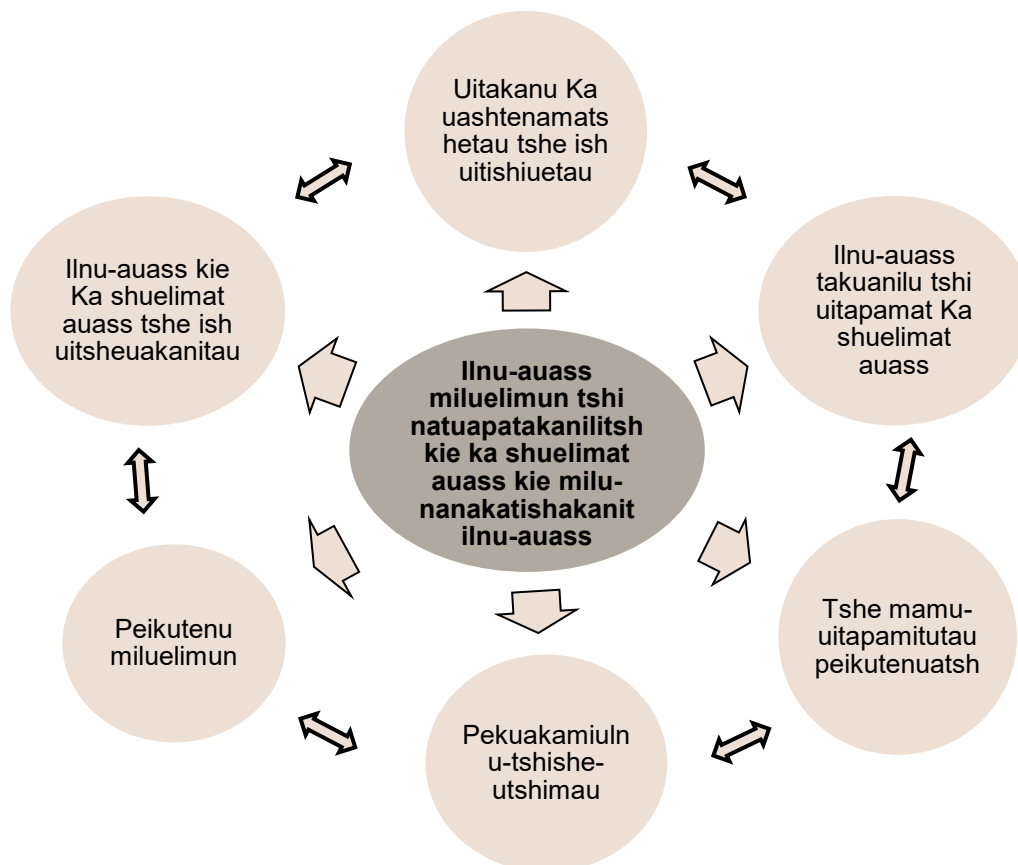
Ka uashtenamatshetau issishuemakan ka mishta-uashtenamuakanit auen. Ume e ishinikatekanitsh uitamatsheu utatusseunuau. Ka uashtenamatshetau tshetshi uitishatau kie tshetshi uitsheuatau peikutenuatsh kie tshi uashtenakau meshkanau nitetshe miluelimun. Peikutenuatsh tshe itutetau nite Shaputuan tshika mishkamuatsh tshe ish uashtenakanilitsh umeshkamuau kie etatu tshi milupalitau kie milekash tshi miluelimutau

Uashteshkuau Tipelitamun

issishuemakan etatu uashteshkuau ek^u ne tipelitamun issishuemakan e tipelimitishunanutsh. Ne uashteshkuau e ishinikatetsh ne tipelitamun issishuemakan e uashtetsh kie pukushelitamun e takuatsh nishtutakuan e takuatsh tshishkutumatsheun ka miluetau kie mitelitakuan e tatau tshitanashkutapaminuatsh eshk^u e tutamuatau meshkanau kassinu peikutenuatsh Pekuakamihtsh

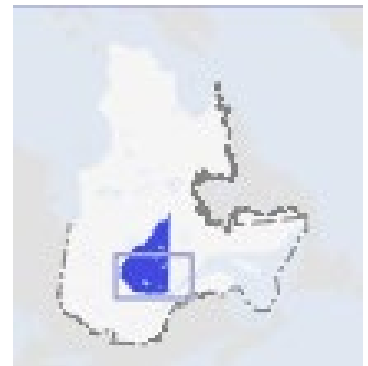
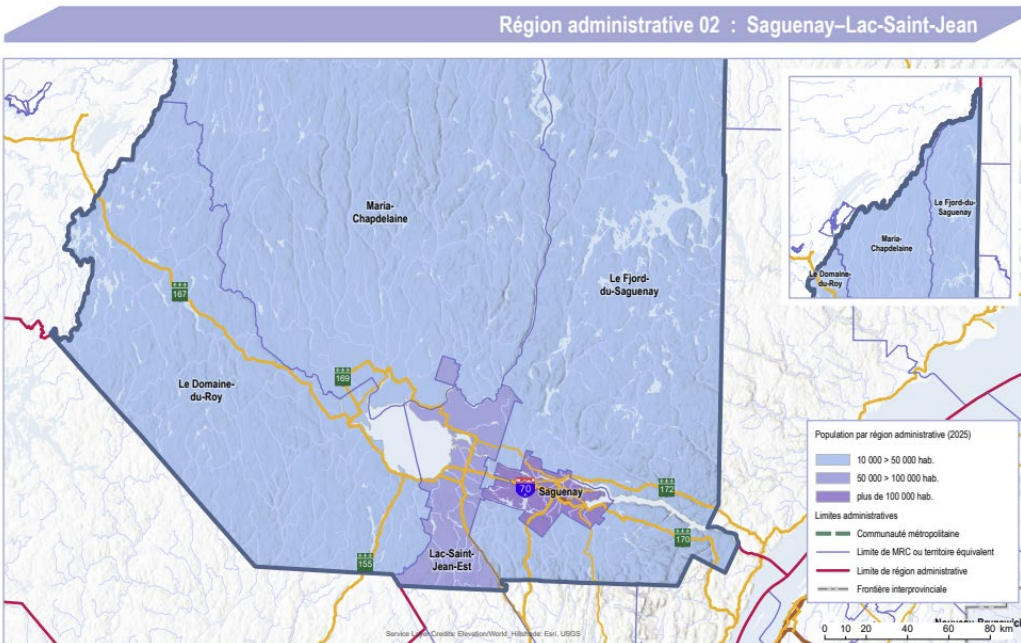
AIMUNA KA ATSHITASHUNASHTTESH 2 KASHTAHIKANA

- Ume aimuna uitam^u kashtahikana tipelitamun Uashteshkuau.
- Ne nasht ushkatsh kashtahikan nashekanu tshi miluelimut ilnu-auass kie Ka shuelimat auass takuan tshi mishta-nanakatishakanit ilnu-auass.
- Ilnu-auass kie Ka shuelimat auass takuanilu kuishk^u tshi nishtutatishutau, ui utinakanitsh kashtahikan takuan tshi uitsheuakanit ilnu-auass kie Ka shuelimat auass kassinu auen tshi utinak uitishiueun tshe ish uitishikut kie e itapashtat.
- Kutaka kashtahikana eukuan umehi :
 - ✓ Tshi uitakanitsh Ka uashtenamashtetau utatusseunuau (eish atussetau, auen nite e tat, kie tshi mashinatahakau eish nashakau utatusseunuau);
 - ✓ Ilnu-auass tshi tat ashit Ka shuelimat auass kie utilnim makie aishkatsh kau tshe mamu-uitapamitutau.
 - Tshek ishinakuatsh tshi pashtinakanit ne ilnu-auass nitetshe Ka uitsheuau auass, takuan tshi atusseshtakanitsh kau tshi uitapimat ukau kie utau makie nitetshe Ka shuelimat auass.
- Ume ulashinatahikan tshi uitishikuiek tshetshi etatu milu-nishtutakanitsh kashtahikana :



AIMUNA KA ATSHITASHUNASHTTESH 3 UASHTESHKUAU TIPELITAMUN NITETSHE ASSIHTSH KIE TSHE ISH PIMIPALITAKANITSH ASHKASHKU

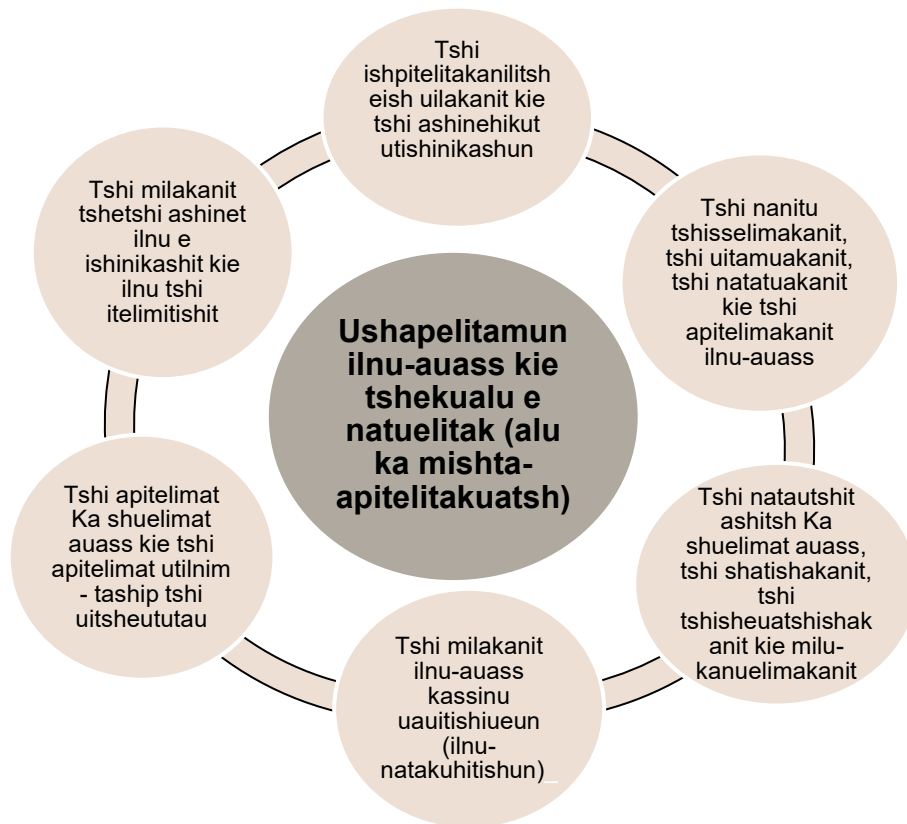
- Ume aimuna uitam^u auen tshi apashtat umelu tipelitamun.
- Tshe pitutepalitsh ne tipelitamun, eukuan nitshenatsh tshe apashtatau :
 - PekuakamiInuatsh kie utauassimau ka apitau Mashteuiatsh;
 - Innu-auassatsh ka apitau uashka Pekuakami kie Saguenay.
- Aishkatsh ashkashku tshi takuatsh tipelitamun nitetshe e tatau ilnu-auassatsh, utenahtsh;
 - ✓ Shekutamitsh
 - ✓ Jonquièrè
 - ✓ La Baie
 - ✓ Alma
 - ✓ Roberval
 - ✓ Dolbeau-Mistassini
 - ✓ Saint-Félicien
 - ✓ Saguenay
- Eukuan ume assi-kalu e nukutakanitsh tanite tshe pitutepalitsh tipelitamun uashka Pekuakamihtsh :



Utenau-kaluatsh : Utenahtsh kie nite e apinuatsh, Upishtikiuau-tshishe-utshimau, <https://cdn-contenu.quebec.ca/cdn-contenu/adm/min/affaires-municipales/publications/cartes/region/02.pdf>

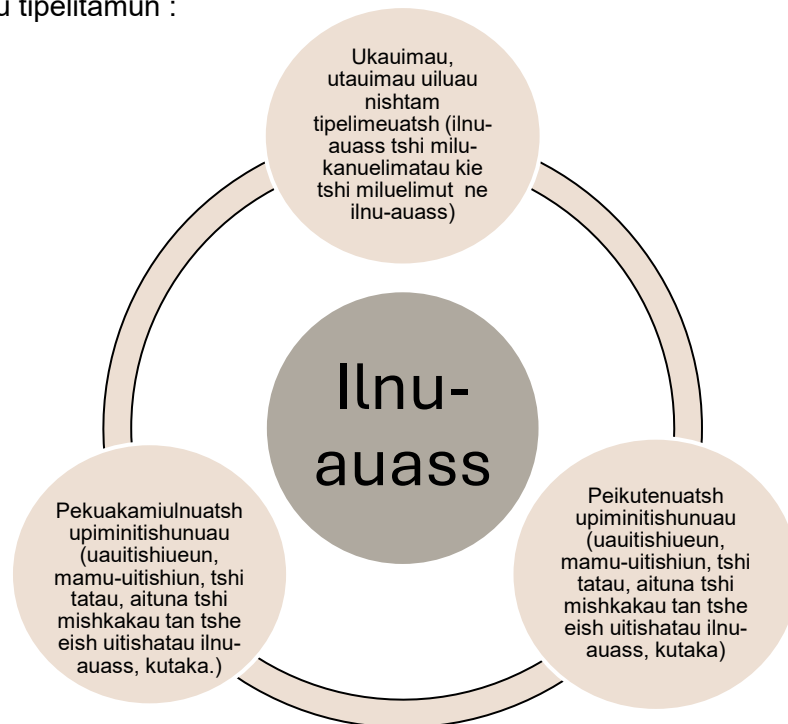
AIMUNA KA ATSHITASHUNASHTETSH 4 ILNU-AUASS USHAPELITAMUNA

- Ume aimun uitam^u ilnu-auass ushapelitamun.
- Tapuetamun tshe tapuetakanitsh takuan ilnu-auass ushapelitamun tshi utinakanilitsh eukuan ne alu e apitelitakuatsh.
- Tshetshi ishpitelitakanilitsh ushapelitamun ilnu-auass, takuan :
 - ✓ tshi ishpitelitakanilitsh e ishinikashit ilnu-auass, tshi ashinehikut utilnu-aitun (nelueun, tshitassinu, ilnu-aitun, kutaka kie aituna.);
 - ✓ tshi milakanit ilnu-auass uitishiun tshetshi miluelimut kie e milu-nanakatishakanit. Kie tshi milu-tshiuenamuakanit eish nutepalit, e itelimunanuatsh, eish aimituashunauatsh, e nutepalit shatishiun;
 - ✓ tshi natutuakanit kie tshi apitelitakanilitsh tshekualu e natuelitak;
 - ✓ kie tshi tshisselimakanit tan itelimut, ilnu-auass pukutau e piminitishit kie tipelimitishu e unipalit ekue alu ilnishit;
 - ✓ tshi kanuelitakanitsh eish uitsheutatau ashitsh Ka shuelimat auass kie utilnim.
- Ilnu-auass apatshitau tshi nitautshit ashitsh Ka shuelimat auass, tshi milakut shatishiun, nanakatishiun, piminitishun, uitishitun, tshisheuatishiun, tipelimitishun, miluelimun kie milupun.
- Ume ulashinatahikan tshi uitishikuiek e nishtutakanit ushapelitamun ilnu-auass :



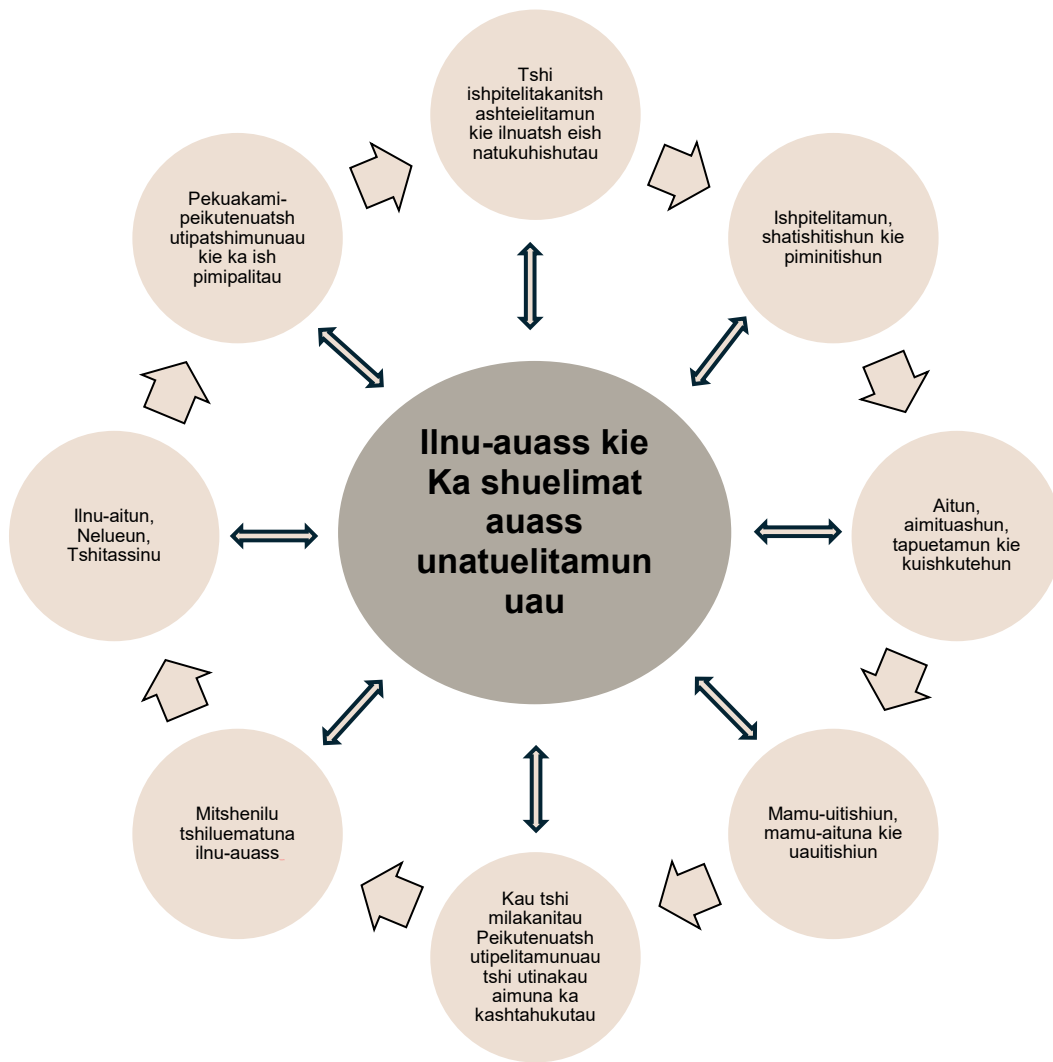
**AIMUNA KA ATSHITASHUNASHTETSH 5
UKAUIMAU KIE UTAUIMAU, E TSHILUEMATUNANUATSH MAK
PEKUAKAMIULNUATSH PIMINITISHUN**

- Ume ka atshitashunashtetsh 5 uitam^u ukauimau, utauimau, ka shuelimat auass mak Pekuakamiulnuatsh eish tipelimatau ilnu-auassatsh.
- Ume ka atshitashunashtetsh 5 uitam^u uauitishiueun, e mamu-uitishitunanuatsht kie mak mamu-tapuetatishunanuatsht.
- Apitelitamuna :
 - ✓ ukauimau, utauimau makie ka nitautshinat auass uiluu nishtam tshika milu-tutueuatsh ilnu-auass (ukauimau, utauimau u piminitishunuau);
 - ✓ Ka shuelimat auass uitishiueu e milu-tutuatsht kie tshi miluelimut ilnu-auass kie tshi ashu-miluetau ilnu-aitun (tshilueamatunanuatsht piminitishun). Ka shuelimat auass kie uil tutam^u tshi milu-nanakatishakanit ilnu-auass;
 - ✓ Pekuakamiulnuatsh kie uiluu tutamuatsht tshetshi milu-tutuatau, tshi milu-nanakatishatau kie tshi milakanit miluelimun ilnu-auass nitetshe utsh ilnu-aitun (Pekuakamiulnuatsh piminitishun);
 - ✓ kukuminuatsh kie tshimushuminuatsh mishta-apitelitakuanilu eish uitishiuetau;
 - ✓ umiluelimunuau ilnu-auassatsh kie e milu-nanakatishakanitau eukuan ne ilnuatsht piminitishun;
 - ✓ Ka shuelimat auass kie utilnim takuanilu tshi tatau kie tshi tutakau tshetshi ilnu-auass kanuelimukut Ka shuelimat auass kie tshi kanuelimakanit ilnussihtsh (eukuan nelu peikutenuatsht kie Pekuakamiulnuatsh e mishkakau tshe eish uitishatau ilnu-auass).
- Ume ulashinatahikan tshi uitishikuiek e nishtutakanit eish takuatsh nitetshe Uashteshkuau tipelitamun :



AIMUNA KA ATSHITASHUNASHTETSH 6
ILNU-UELUTISHIUNA KIE TSHITSHUE TIPAHIKANA TSHI MILU-NASHEKANITSH

- Ume aimuna ka atshitashunashtetsh 6 uitam^u ilnu-uelutishiuna kie tshitshue tipahikana tshi milu-nashakau Pekuakamiulnuatsh tshe eish uitishatau ilnu-auass kie Ka shuelimat auass.
- Ilnu-uelutishiuna eukuan umehi :
 - ✓ Ishpitolitamun;
 - ✓ Ishpitolitamun kie tshi shatishitishit ilnu-auass kie Ka shuelimat auass;
 - ✓ Uauitishitun kie matinueun;
 - ✓ Pekuakamiulnuatsh mamu-uitishiun kie e tatau;
 - ✓ Tapuetatun kie kuishkuteheu;
 - ✓ Ilnu-auass kie Ka shuelimat auass eish uauitishakanit kie eish uitsheukanit.
- Tshitshue tipahikana tshi milu-nashekanitsh, Pekuakamiulnuatsh apitolitamuatsh:
 - ✓ aitun kie e ashu-miluanuatsh nelueun kie ilnu-aitun, tshi nashekanitsh Pekuakamiunuatsh utilniunuau, aimituashuna kie ueshkatsh tshisselitamuna;
 - ✓ ilnu-aitun e apitolitakanitsh tshetshi miluelimunuanuatsh kie tshetshi ashineuatshuanuatsh eish uilitishit auen;
 - ✓ apitolitam^u ilnu-auass tshi uitapamat ka shuelimat auass;
 - ✓ tapitapishkuatsh tipelitamuna, eka malelimitunanuatsh;
 - ✓ eish uitishakanitau ilnu-auassatsh ka massitau kie ushtikuanuhtsh ka akushutau;
 - ✓ mitshenilu eish tshiluematutau ilnu-auass ashitsh Ka shuelimat auass tshe ishpitolitakanilitsh;
 - ✓ Ilnu-auass ashitsh Ka shuelimat auass eish natuelitakau tshe ish uitishakanitau;
 - ✓ peikutenuatsh utipelitamunuau tshi utinakau aimuna ka kashtahukutau.
- Tshetshi milakanitau tshi uitishuetau peikutenuatsh kie Pekuakamiulnuatsh, kupaniesh tshipatshi nanitu tshisselimeu Ka shuelimatau auassatsh nitetshe utatusseun.
- Atusseuna kie takuan :
 - ✓ tshi ishpitolitakanitsh papeik^u peikutenuatsh ashtelitamun kie ilnuatsh eish natukuhishutau;
 - ✓ tshi nashekanitsh papeik^u Pekuakami-peikutenuatsh utipatshimunuau kie ka ish pimipalitau.
- Ume ulashinatahikan tshi uitishikuiek e nishtutakanit eish takuatsh nitetshe Uashteshkuau tipelitamun :

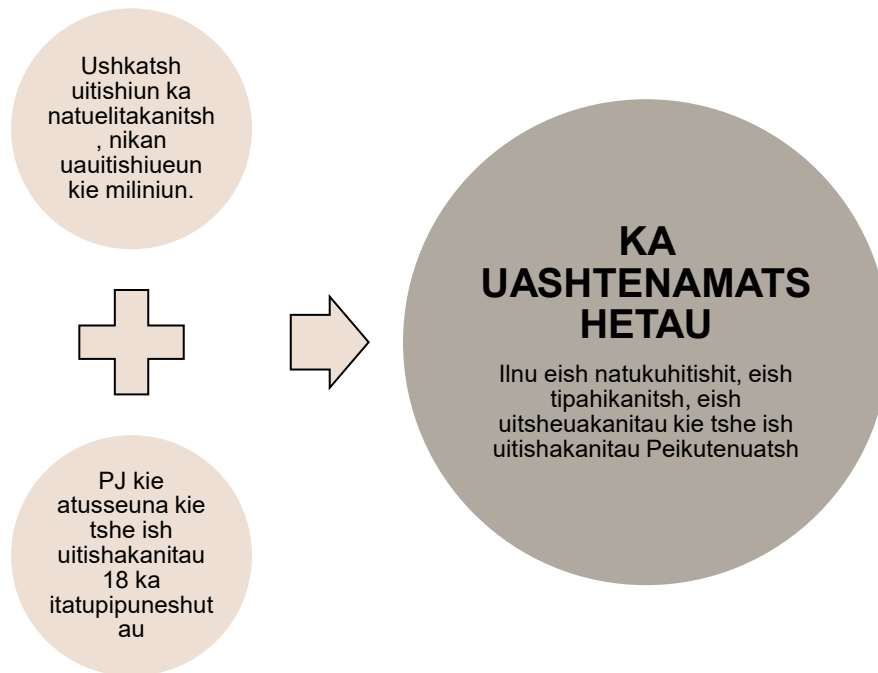


AIMUNA KA ATSHITASHUNASHTTESH 7 ILNU-AUASS KIE KA SHUELIMIT AUASS UTIPELITAMUNUAU

- Ka atshitashunashttesh 7 uitam^u ilnu-auass utipelitamuna, ukau, utau kie Ka shuelimat auass tshe ish pimipalitakanitsh.
- Ilnu-auass kie Ka shuelimat auass umelu utipelitamunuau :
 - ✓ tshi nelue-aimahakanitau e natuelitakau uitishiun;
 - ✓ tshi nanitu tshisselimakanitau, tshi aimitau kie tshi petuakanitau eshk^u eka utinakanitsh aimuna;
 - ✓ tshi uitsheukutau auelu e shutshelimatau;
 - ✓ tshi naushunakau tshe eish natukuhitishutau uiluau e itelitakau;
 - ✓ ashkashku tshi milakanitau uitishiuna tshe uitishikutau;
 - ✓ tshi mamishimuetau nitetshe Kananakatshitat miam ka itashttesh tipelitamun.
- Ilnu-auass kanuelitam^u utipelitamuna miam ka mashinatelitsh nite *Kassinu ilnu-auassatsh, ka utshitau mishue ilnussihtsh utipelitamunuau* (ashushtakanu aimun 3 nite tipelitamun). Umehi passe tipelitamuna:
 - ✓ eka tshi nekatishakanit, tshi tshishpeuatakanit tshetshi eka matshitutaukanit, tshetshi eka mishue natamuk ish tutaukanit kie mak tshetshi eka tatshishkakut matshi-pamelitamun, tshetshi eka nasht malelimakanit;
 - ✓ tshi tshishkutamuakanit utilnu-tipatshimun kie aitun;
 - ✓ tshi milakanit uitishiuna kie tshi natukuhuakanit luash tshe ishpish miluelimut.
- ✓ **APITELITAMUN** : Ilnu-auass kutulnu ashu neu ka itatupipuneshit (14) kie etatu ka tshishelniut, ukau kie utau makie Ka nitautshinat auass muk uiluau tshipatshi anuelitamuatsh utaimunuau Ka uashtenamatshetau, Ka tshisheuatishitau kie Ka tshikaiashitenamuetau kie tshipatshi natuelitamuatsh tshetshi kau tshitapatakanilitsh utaimunuau Kaishpitelimakanitau miam iteshttesh nite Uashteshkuau tipelitamun.
 - Miam ume tshek ma ilnu-auass kie mitshet Ka shuelimat auass tapuetakau ukum tshi kanuelimukut etshi tapuetatishutau Ka tshisheuatishitau, ukumishimau apu tshi natsh-anuelitak nitetshe Kaishpitelimakanitau. Mishkuatsh mak uil ukumishimau milakanu tshi nanitu-natshishkuakanit kie tshi uitak eish ishpilinanuatsh usham kie uil shuelimeu ilnu-auass.
 - Kie miam ume tshek ilnu-auass kie alu apitu e itashutau Ka shuelimat auass tapuetamuatsh ilnu-auass tshi kanuelimukut ukum etshi tapuetatishutau Ka tshisheuatishitau, ukauimau tshipatshi anuelitamuatsh nitetshe Kaishpitelimakanitau.

**AIMUNA KA ATSHITASHUNASHTETSH 8
KA UASHTENAMATSHETAU UTATUSSUEUNUUAU**

- Ume ka atshitashunashtetsh 8 uitam^u ka uashtenamatshetau utatussueunuau, auenitshenatsh tshe atusseshtakau Uashteshkuau tipelitamun. Eukuan utshenatsh tshe atusseshtakau ne tipelitamun :
 - ✓ Ka uashtenamatshetau;
 - ✓ Ka tshisheuatishitau;
 - ✓ Ka tshikaiashitenamuetau;
 - ✓ Kaishpitelimakanitau;
 - ✓ Kananakatshitat.
- Ashitsh ne tipelitamun, ushkatsh uitishiun ka natuelitakau kie PJ apu tshika utsh tatau, Ka uashtenamatshetau uiluau tshika nikanipuatsh, ume ulashinatahikan tshi uitishikuiek :



- Ka uashtenamatshetau kassinu mamu eish atusseshtuatau auassatsh kie peikutenuatsh kie uiluau nashamuatsh tipelitamun.
- Tshishtin tshika apatshishakanuatsh Ka tshisheuatishitau kie Ka tshikaiashitenamuetau, Kaishpitelimakanitau kie Kananakatshitat apu tshika utsh taship atussehakanitau, issishuemakan peikutenuatsh apu tshika utsh taship natuelimatau Kaishpitelimakanitau kie Kananakatshitat.
- Tapahikana tshi eieshkushtakanu tshetshi milu-nashakau utatusseunuau Kaishpitelimakanitau kie Kananakatshitat.
- Ume ulashinatahikan tshi uitishikuiek tshe nishtutamek tan tshe ishinakuatsh atusseun ne tipelitamun :



TSHISHTIN

Ka tshisheuatishitau

- **Auenitshenatsh e tatau:** Ilnu-auass (ka milu nishtutak) ukau, utau, kie Ka shuelimat auass.
- **Nite Ka tshisheuatishitau utaitunuau:**
Tshi utinakau tapuetun, tshi tutakau peikutenu aitun mashinaikan, tshi tutakau kau tshi milupalihitutau peikutenuatsh.
- **Utatusseunuau:** Tshi tshisselitakau eitapashtat Ka shuelimat auass, kie tshi natautuau, tshi mishkakau uitishiun peikutenuatsh kie uitishiun ilnussitsh kie tshi uitishitau Ka shuelimat auass tshetshi kau milupalihitutau peikutenuatsh.
- **Ume aimun 1 uapataliueun:** Ka tshisheuatishitau tshipatshi utinamuatsh tapuetamun tshetshi ilnu-auass kunuelimukut ukum uelapissish tshetshi milu-nanakatishat ussime kie tshetshi miluelimulitsh. Ukauimau, utauimau tshika tshi petsh utisheuatsh ukumau mashtel-atushkan ek^u ne utussamau e nishuau-atushkanuatsh uetakussitsh tshetshi uitishat ukumau.
- **Ume aimun 2 uapataliueun:** Ka tshisheuatishitau tshipatshi utinamuatsh tapuetamun tshetshi ilnu-auass uitapamat ukau, utau muk ukumishamau kie nitshenitsh pessish ka apitau natsh uapamatau ilnu-auass ukau, utau papeikua peik^u tshishik^u mamishkuatsh tshetshi tshishtin uapatakau e milupalinuatsh.
- **Mishkutshitakanu:** Ka utinakau man tapuetamun ka atusseshtuatau ilnu-auassatsh nitetshe utsh LPJ kie nitetshe ka utinakanit tapuetamun (Upishtikuiou tipelitamun, ka auassitau tipelitamun).

TSHISHTIN

Katshikaiashtenimuetau

- **Auenitshenatsh e tatau:** ilnu-auass (ka itatupuneshit tshi nishtatak), ukau, utau, passe ilnuatsh ka atusseshtakau peikutenu aitun mashinaikan (miam ukumau, utussamau), ka atusseshit miam (ka natukuhuetau, ka-atusseshtuatau ka nekatshikutau shkutuapui, napiel, matshi-natakulin ka tshishkueshkatshet) kie kupaniesh.
- **Utaitun:** utatusseunuau takuanilu tshi milatau, ilnu-auass kie Ka shuelimat auass, uitishiun eitapashtatau, tshi tutakau uitsheutun kie milu-uitishiueun, tshi tapuatakau peikutenu aitun mashinaikan kie tshi tutakau tshe milu aimihitutau ashitsh kassinu Ka tshikaiashtenimuetau.
- **Ume aimun 1 uapataliueun:** ilnu-auass patetatsh itatupuneshu utussa kanuelimuku ashitsh utau, ukau kie ukum uitisheuatsh utussamau. Ukau, utau, utussamau, ukumau, kupaniesh kie ka uitishiuet ka nashakau umashinaikan ne ilnu-auass nite e tatau kie uilau nitetshe Ka tshikaiashtenimuetau takuan tshi uauapatakau kassinu eitapashtat Ka shuelimat auass.
- **Ume aimun 2 uapataliueun:** Ilnu-auass 14 ka itatupuneshit uitapameu ukau, utau muk mak uil uitishikuatsh ukumau, umushumau tat^u tshishik^u ka atussanuatsh. Ne ilnu-auass uitishiku ka atusseshtit tat^u tshishik^u tshetshi tipelimitishit. Ilnu-auass ukau, utau, ukum, umushum, kupaniesh mak ka atusseshtit tat^u tshishik^u ka uitishikut uilau kie teuatsh nite Ka tshikaiashtenimuetau kie nanakatshieuatsh ilnu-auass kie Ka shuelimat auass, kie nanakatshisheuatsh ilnu-auass kie Ka shuelimat auass tshi takunilish kassinu tshekuale eitapishtatau. Mishkutupishtueuatsh Ka atusset LPJ

TSHIPATSHI

Kaishpitelimakanitau

- **Auenitshenatsh e tatau:** peik^u Pekuakamiulnu makie kutak auen ka talitsh ukalum shash etshi atusseshtuak peikutenuatsh kie mak nish^u Pekuakamiulnuatsh e ishpitelimakanitau. Peik^u Pekuakamiulnu ka aimisht ka itapit tshi uitsheuet muk apu mashinatahutishit e utinak tapuetun.
- **Utaitunuau:** tshi utinak tapuetun auass 14 e itatupuneshit eka tapuetautishitau ukau makie utau, Ka nitautshinat auass kie Ka uashtenamatshetau.
- **Ume aimun 1 uapataliueun:** Ka tshisheuatishitau utinamuatsh ka utshepishtakanitsh aituna tapuetamun tshi kanuelimukut ukum ne ilnu-auass usham apu nasht pamelimukut ukau. Apu tapuetaut ne ukauimau apu tutak e itakanit. Kaishpitelimakanitau tshika uitamuakanuatsh e ishpalinuatsh kie utinam^u tapuetun tshetshi miluelimut ilnu-auass.
- **Ume aimun 2 uapataliueun:** Kupaniesh utinam^u ka utshepishtakanitsh aituna tshe kanuelimukut ushimakahun. Utauimau nasht apu taputak kie apu ui ashuapamat Ka tshisheuatishitau. Natuelitam^u ilnu-auass kau tshi uitapamukut tietch. Kaishpitelimakanitau tshika uitamuakanuatsh e ishpalitau tshetshi utinakau tapuetun ilnu-auass tshi miluelimut.
- **Mishkutshitakanu:** katipashkunishet (Upishtikuiou-tipashkunikan, ka auassitau tipashkunikan) tshe mishkutapishtuakanitau.

TSHIPATSHI

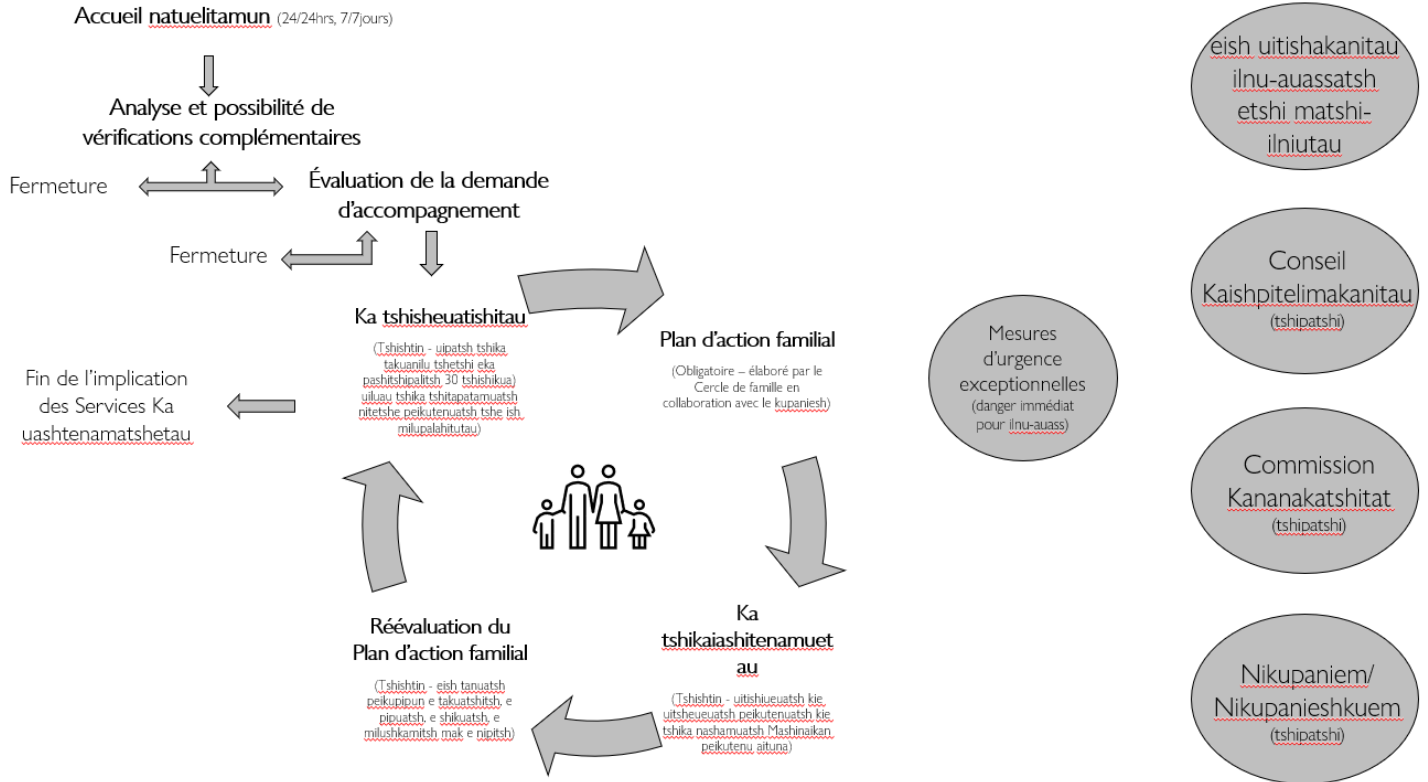
Kananakatshitat

- **Auenitshenatsh e tatau:** Peik^u Kananakatshitat ashitsh nitshenatsh ka uitsht-atussematau, natuelitamakunakue.
- **Utaitun:** mitshenilu utaituna, umehi tshi ishpatelitanitsh tipelitamun Uashteshkuau, tshi milu-nanakatshitat tshe ish uitishiuauatsh, tshi uitak ilnu-auass utipelitamun kie Ka shuelimat auass, tshi kashtinak kie tshi ueueshtat tshekuan eka miluelitakanitsh, tshi nanitu tshisselitakanitsh ka matshipalitsh, tshi atusseshtak natuelitamun nete ka utshapalitsh Kaishpitelimakanitau kie tshi miluet aimun tshetshi etatu milu-uitishiuauatsh kie milu-apashtakanitsh tipelitamun.
- **Apitelitamun:** Kananakatshitat takuanilu tshi tutak peik^u-pipun mashinaikan tshi uitak utatusseun kie tan tshi alu milupalitsh auassatsh e uitishakanitau. Ne mashinaikan tshika uitakanu netetsh ka utshimau-aiminuatsh tshetshi shaputue tshi tshisselitakanitsh ne tipelitamun kie taship tshi uauitakanitsh.
- **Ume aimun 1 uapataliueun:** Peikuakamiulnu apu miluelitak ka ish uitishikut tipelitamun, tshipa tshi natsh uitamueu Kananakatshisitat.
- **Ume aimun 2 uapataliueun:** Kananakatshisitat uapatam^u Ka uashtenamatshetau passe mashinaikana apu utsh atusseshtakanitsh. Uil e itelitak tshiptshi nanitu tshisselitamu.
- **Mishkutshitakanu:** kassinu Ilnuatsh Upishtikuiou tipelitamun, ka auassitau tipelitamun

AIMUNA KA ATSHITASHUNASHTETSH 9 AUENITSHENATSH TSHE TSHITAPATAKAU NATUELITAMUN

- Ka atshitashunashtetsh 9 uitam^u tan tshe eish natuapatakanitsh uitishiun kie tan eish pimipalitatau uiluau Ka uashtenamatshetau.
- Tshi pimipalitakanitsh tipelitamun muk peikushu uitishitun nitetshe tshe takuatsh natuelitamun auassatsh kie peikutenuatsh. Ka uashtenamatshetau ekut nitshenatsh tshe kashtinakau natuelitamun.
- Ilnu-auass uil utinakanilu eish natuelitak, Ka shuelimat auass uil tshika utinam^u aimun auass ushapelitamun katshi natshishkatutau Ka tshisheuatishitau (tshishtin). Ka tshisheuatishitau tshika utinamuatsh aimun tshetshi etatu milupalahitutau peikutenuatsh kie tshi takuatsh Peikutenu aitun mashinaikan. Ek^u ne mashinaikan takuan tshi mashinatetsh :
 - ✓ peikutenuatsh eish pimipalita;
 - ✓ tan tshe ish nashekanitsh tshetshi kau milupalitau peikutenuatsh kie tshetshi utinakau aimun Ka tshisheuatishitau;
 - ✓ kashtahikana;
 - ✓ auenitshenatsh tshe tatau nite Ka tshikaiashitenamuetau, utatusseunuau kie tanitatua tshe natshishkatutau katshi ish uitakau Ka tshisheuatishitau makie Kaishpitelimakanitau tshipatshi mashtel utinakanilu utaimunuau;
 - ✓ tan ishpish kau tshi tshitapatakanitsh Peikutenu aitun mashinaikan.
- Katshi tapuetakau Peikutenu aitun mashinaikan Ka tshisheuatishitau kie kupaniesh (tshishtin), Ka tshikaiashitenamuetau nanakatshitauatsh tshi ishpitelitakanilitsh unatuelitamun ilnu-auass kie Ka shuelimat auass, milakanitau tshi eish apatshitatau. Ka tshikaiashitenamuetau milu-uitamueuatsh Ka shuelimat auass kie ka uitishiuetau.
- Nanikutin e matshipalahitutau peikutenuatsh, Ka uashtenamatshetau takuanilu tshi ueueshtatau:
 - ✓ Nasht eka pamelimakanit auass;
 - ✓ E nekatishakanit auass;
 - ✓ E uapatak e mashikatunuanuatsh auass;
 - ✓ E matshi-tutatuakanit auass;
 - ✓ E mashikuakanit auass.
 - ✓ E nekatishitishit auass.
- Kaishpitelimakanitau teuatsh (nanikutin) e matshipalahitutau peikutenuatsh kie eka nishtutatishunuanuatsh etshi utinakanitsh aimun :
 - a) ilnu-auass 14 ka itatupipuneshit kie etatu;
 - b) ukauimau, utauimau kie nanikutin Ka nitautshinat auass;
 - c) kupaniesh milu-uitak tshekuan uetsh matshipalihitunuanuatsh katshi ashpitshishamut nitetshe ilnu-uelutishiuna kie tipelitamuna ka takuatsh nite tipelitamun Uashteshkuau.
- Kaishpitelimakanitau e utinakau aimun eukuan ne mashtel aimun muk tshipatshi kau tshitapatamuatsh natuelitamuakanit Kananakatshitat.

- Ume ulashinatahikan tshi uitishikuiek tshi nishtutamek eish atussetau Ka uashtenamatshetau (kashteushinateu aimuna tshishtin tshi nashekanitsh ek^u nihi ka uapashinatekau tshipatshi nashekanu) :



➤ Ui nishtunamek alu, tapuatamuk « Tan tshipa ish nashekanu *Uashteshkuau Tipelitamun* ».

AIMUNA KA ATSHITASHUNASHTTESH 10 UTSHEPISHTAKANU AITUNA

- Ume ka atshitashunashttesh 10 uitam^u tan ishpish kie tanite kupaniesh uipatsh tshe aiteit.
- Ilnu-auass e ui milu-nanakatishakanit kie e ui milu-tutuakanit uipatsh uitishakanu, takuanikue tshetshi milu-tutuakanit ilnu-auass.
- Nihitshiuuna muk nanikutin tshipatshi apashtakanu kie e mishta-apatitsh.
- Ka uashtenamatshetau uilua tshika tapuetamuatsh ne uitishiun kie apu milekash tshe nashakau.
- Tshi tutakanitsh, ilnu-auass 14 ka itatupipusneshit kie alu ka tshishelniut, ukau kie utau makie Ka nitautshinat auass takuanilu tshi nanitu tshisselimakanitau eshk^u eka utinakanitsh aimun-uitishiun. Muk mak uil tshipatshi ishinakuan kupaniesh tshi atusseshtak at peikuan etshi anuelitakau.
- Tshetshi ishpitelitanilitsh peikutenuatsh ka utinakau utaimunuau, uipatsh uitishiun nashekanu luash tshi tatau Ka tshisheuatishitau kie luash tshi mashinatahikanitsh Peikutenu aitun mashinaikan.
Ilnu-auass 14 ka itatupipuneshit kie alu ka tshishelniutau, ukau, utau makie Ka nitautshinat auass tshipatshi uitamueuatsh Kaishpitelimakanitau eka tapuetakau nelu e utshepishtakanu aituna.
 - Miam ume, kupaniesh ituteu mitshuapihtsh katshi takapitshenamakut kamakuneshu, ilnu-auass ka nishupishimuenishit mishkuakanu e peikushishit, apu auelu talitsh. Apu tshisselimakanitau tanite e talitsh ukau mak utau. Kupaniesh tshipatshi itutahe nelu ilnu-auass nete Ka shuelimat auass usham kushpinelimakanu ne ilnu-auass.
 - Miam umehi, kupaniesh tshipatshi itutahe ilnu-auass nete Ka shuelimat auass uelapissish tshi kanuelimakanit makie nitetshe mitshuapihtsh ilnu-auassatsh ka uitishakanitau, apu milakanit ilnu-auass tshi aimahat kutaka auelu, tshi tapuetuakanit tshi natukuhuakanit ilnu-auass uelapissish.

**AIMUNA KA ATSHITASHUNASHTETSH 11
ILNU-AUASS KANUELMAKANIT AITSH UITSHUAHTSH**

- Ume ka atshitashunashtetsh 11 uitam^u tshe ishpitelimakanit ilnu-auass tshetshi aitsh kanuelimakanit.
- Ilnu-auass takuanilu tshi uitapamat Ka shuelimat auass, nasht mashtel tshika tapuetakanu aitsh uitshuahtsh tshe kanuelimakanit katshi kassinu tshitapakanitsh tan tshipa tutakanu.
- Katshi tapuetakanitsh ilnu-auass tshi kanuelimakanit aitsh uitshuahtsh, takuan tshi nashekanitsh ilnu-uelutishuna, ilnu-aitun kie Pekuakamiulnuatsh eish ilniutau.
- Eka tshi kanuelimakanit uitshuahtsh kie eka tshi utinakanilitsh ushapelitamun, nitetshe tshika kanuelimakanu :
 - a) Ukauimau makie utauimau;
 - b) Ka shuelimat auass, ukuma kie umushuma;
 - c) Pekuakamiulnu;
 - d) Namieu Pekuakamiulnu;
 - e) Kutakatsh auenitshenatsh ka mamuhitatau, atikamekulnu, mishta-ashiniulnu, kie kutakatsh;
 - f) Kutak auen e tep tshishelniut.
- Ka ish tshiluematutau ekute nite tshipa ish kanuelimakanu ilnu-auass makie ashitsh kutakatsh ilnu-auassatsh ka kanuelimukutau Ka shuelimat auass makie pessish ka talitsh.
- Takuan kau tshi tshitapakanilitsh ilnu-auass tshetshi kau natshi-uitapamat ukau, utau, Ka nitautshinat auass makie Ka shuelimat auass.
- Tshek aitsh Mashteuiatsh kanuelimakanit ilnu-auass makie namielu Pekuakamiulnu ka kanuelimukut, ilnu-auass takuanilu tshi kanuelitak Ilnu-aitun mashinaikan tshetshi taship itelimitishit miam Pekuakamiulnu tshetshi ashinet e ilnu-ishinikatishit kie tshi nashak ilnu utilniun.
- (Ilnu-auass kau e uitapimat ukau, utau, Ka nitautshinat auass makie Ka shuelimat auass) eukuan ne taship tshe ish nashekanitsh e atusseshtuakanit ilnu-auass kie e kanuelimakanit aitsh uitshuahtsh eukuan ne mashtel aitun tshe utinakanitsh.

AIMUNA KA ATSHITASHUNASHTETSH 12 KA UITSHEUAT AUASS

- Ume ka atshitashunashtetsh 12 uitam^u Ka uashtenamatshetau tshe ish atusseshtuatau Ka uitsheuat auass kie uitam^u Ka uitsheuat auass tan tshe ish atusseshtuat ilnu-auass kie Ka shuelimat auass.
- Ka uashtenamatshetau uiluau tipelitameuatsh Ka uitsheuatau auassatsh kie uiluau tipelitamuatsh tan tshe ish tshitapatekanilitsh unatuelitamun ne ka uitsheuat auass tshetshi milakanit umashinaikan. Ne mashinaikan milueu tshe ish milualitsh eish ishpalinanuatsht kie tshi uapatakanitsh Pekuakamiulnu utilniun.
- Ka uashtenamatshetau uitisheuatsh kie uitsheueuatsh Ka uitsheuat auass eish nanakatishakanit kie eish atusseshtuakanit ilnu-auass.
- Ka uitsheuat auass eshk^u eka atusseshtuat ilnu-auass, takuanilu tshi nishtutak kau tshe mamu-uitapamitutau peikutenuatsh eukuan ne ushkatsh utatusseun.
- Ka uitsheuat auass takuanilu :
 - ✓ tshi milat ilnu-auass milu-kanaushun, shatishitun, shuelimun, uitishiun kie tshi nashak ilnu-aitun;
 - ✓ tshi atusset ashitsh Ka shuelimat auass tshetshi kashtahikanitsh Peikutenu aitun mashinaikan miam ka ui tutakanitsh tshi mamu-uitapamitutau peikutenuatsh;
 - ✓ tshi tutak tshetshi milu-uitsheututau ilnu-auass ashitsh Ka shuelimat auass kie ashitsh utilnim ne ilnu-auass;
 - ✓ ishpitelitak Peikutenu aitun mashinaikan;
 - ✓ utinak ilnu-aitun kie Pekuakamiulnuatsh utilniuu ashitsh ishpitelitamun;

AIMUNA KA ATSHITASHUNASHTTETSH 13 NIKUPANIEM/NIKUPANIESHKUEM

- Ume ka atshitashunashttetch 13 uitam^u Nikupaniem/nikupanieshkuem kie tan tshe aitaui tshetshi kashtinakau mashinaikan tshe milakutau Kaishpitelimakanitau.
- Nikupaniem/nikupanieshkuem eukuan eish ishinikatakanitau e uaitakanitsh ueshkatsh kie eshk^u kashikatsh ilnuatsh ka ish kanuelimat auass.
- Eukuan ne Peikutenuatsh nishtutatun kie ishpitelikakanu ilnu-uelutishiuna, uitishiun kie peikutenuatsh eish uitishitutau kie Pekuakamulnuatsh eish uitishitutau;
- Nikupaniem/nikupanieshkuem ueshkatsh ka ish kanuelimakanit ilnu-auass apu apashtakanitsh Upishtikuau-tipelitamun ka kashtahukut Ilnu-auass kie ukau mak utau. Nikupaniem/nikupanieshkuem apu pikunak ilnu-auass eish kanuelimakanit muk mak uil ne ka kanuelimat auass uil tipelimeu auass tshe ishpish tshish-kanuelimat.
- Pekuakami-peikutenu tshipatshi natuelimeu Nikupaniem/nikupanieshkuem muk tanite e apit Upishtikuiaussitsh.
- Kaishpitelimakanitau uiluau tshisselitamuatsh e milualitsh umashinaikan Nikupaniem/nikupanieshkuem. Eka milualitsh, Kaishpitelimakanitau tshipatshi eka mileuatsh mashinaikan Nikupaniem/nikupanieshkuem.
- Nikupaniem/nikupanieshkuem katshi tshish kanaushutau, ka pashakutishanatau auassatsh makie nitshenatsh uelapissish ka kanuelimatau auass uiluau utinamuatsh aimun ilnu-auass eish pimipalit.

**AIMUNA KA ATSHITASHUNASHTETSH 14
EISH UITISHAKANITAU ILNU-AUASSATSH ETSHI MATSHI-ILNIUTAU**

- Ume ka atshitashunashtetsh 14 uitam^u Ka uashtenamatshtetau utatusseunuau miam nite ka mashinatetsh *Tipelitamun etshi matshi-ilniutau ka auassiutau, LC 2002, c 1*).
- Pekuakamiulnuatsh shash kanuelitamuatsh eish atusseshtuakanitau ka auassiutau etshi matshi-ilniutau, ek^u ume ka atshitashunashtetsh eish uitakanitsh, uiluau tipelitimeuatsh ilnu-auassatsh ka matshi-ilniutau.
- Ka auassiutau ekut nitshenatsh 12 ka itatupipuneshutau luash 18 ka itatupipuneshutau ka matshi-ilniutau miam nitetshe ka itashtetsh Mashinaikanihtsh *Code criminel, LRC 1985, c C-46*.
- Pekuakamiulnuatsh shash nelu kanuelitamuatsh eish tipashkunamuatau ka matshi-ilniutau.
- Ka ish atusseshtuakanitau ilnu-auassatsh etshi matshi-ilniutau eukuan ume :
 - ✓ Tshipatshi tshipuhakanuatsh;
 - ✓ Eieshkushtakanitsh kie itutakanitsh mashinaikan ilnu-auass etshi matshi-ilniut nete ka tipashkunitshetau;
 - ✓ Tshipatshi tapuetamuatsh itsh ish anuelimakanit ne ka matshi-ilniut (apu tshika utsh itutahakanit nite ka tipashkunitshet kie tshipatshi milakanu tshi ueueshtat etshi matshi-ilniut: tshi kashinamakut auelu ka matshi-tutuat e mashinahamuat);
 - ✓ Tshi uitishakanitau ilnu-auassatsh ka matshi-ilniutau.
- Ka tipashkunitshetau (Upishtikuau-tipashkunikau, ka auassiutau tipashkunikau makie ne nasht Ka ishpapit tipashkunikau) uiluau kanuelitamuatsh tshe eish ueueshakanitau ilnu-auassatsh ka matshi-ilniutau.
 - Miam ume, ilnu-auass 15 ka itatupipuneshit tshimutu atautshuapissitsh ilnussitsh. Tshipatshi itakanu ne ilnu-auass tshetshi mashinahak e mitatak katshi matshi-ilniut nite atautshuapissitsh kie kau tshishikashit nelu ka ish tshimutit.
 - Miam ume ilnu-auass 16 ka itatupipuneshit etshi mashikuat kutak Pekuakamiulnu. Ilnu-auass tshisselimakanu tshitshue e matshi-ilniut. Shash nelu nishuau atshishkanan ilnu-auass e nakanakanit katshi tshitshue matshi-aitit. Ne ishpalitsh, Ka Uashtenamatshtetau ashitsh kamakunueshatsh tshipatshi natuelitamuatsh tshi tshipuhuakanit ne ka matshi-ilniut.

**AIMUNA KA ATSHITASHUNASHTETSH 15
TIPAHIKANA EISH UITAKANITSH TSHETSHI EKA
UILAKANIT AUEN**

- Ume ka atshitashunashtetsh 15 uitam^u tipahikana eish uitakanitsh tshetshi eka auen uilakanit kie tanite tshe miluanuatsh eish tshisselimakanit nitetshe utsh pimipalitakanitsh tipelitamun.
- Tshishtin takuanilu tshetshi eka uilakanit auen ka atusseshtuat ilnu-auass kie Ka shuelimat auass kie takuan tshi ishpeleitakanitsh. Kie uiluau Ka tshisheuatishitau kie Ka tshikaiashitenamuetau takuanilu tshi nashakau.
- Ne ilnu-auass 14 ka itatupipuneshit kie alu e tshishelniut tshipatshi uitakuanilu eish ilniut kie tshi uilakanit etshi tapuetak makie ukauimau, utauimau tapuetakau ilnu-auass eka 14 itatupipuneshit uitakanitsh utilniun makie ish uilakanit. Tshek ukau, utau ne ilnu-auass uilakanitau takuanilu tshi tapuetakau tshi uilakanitau. Ishinakuan tshi uitakanitsh katshi tapuetakanitsh.
- Kassinu kupanieshatsh ka atusseshtuatau ilnu-auassa kie Ka shuelimat auass tshipatshi uauitamatuatsh passe eish tshisselimakanit ilnu-auass tshetshi etatu milu-uitishakanit. Apu shuk tshi uitakanitsh eish apatitsh kie eish aimihitunanuatsh kie takuan tshi milu-uitakanitsh.
- Kupaniesh tshipatshi milakanu tshi tshisselitak tshitshue e matshipalahitunanuatsh tshetshi milu-uitishuet muk tshika takuanilu ilnu-auass 14 ka itatupipuneshit kie alu ka tshishelniut makie ukau, utau tshi tapuetakau. Nihitshisselitamuna kashtinakanu tshetshi milu-nanakatishakanit ilnu-auass kie tshetshi miluelimut. Nihitshisselitamuna at peikuan eka tapuetakau ukauimau, utauimau makie ilnu-auass 14 ka itatupipuneshit kie alu ka tshishelniut muk nanikutin tshika tapuetakanu tshi miluanuatsh.
- Upishtikuau-tipashkunikan, ka auassiutau tipashkunikan tshipatshi tapuetueu kupaniesh tshi uapatak umashinaikan ukau makie utau ne ilnu-auass makie umashinaikan kutak auen e matshi-palit e matshi-nanakatishakanit ilnu-auass kie tshipatshi akunitshepalitau passe mashinaikana ka apatakau ne eish matshipalahitutau. Upishtikuau-tipashkunikan, ka auassiutau tipashkunikan uiluau tipelimeuatsh.
 - Miam ume kupaniesh tshipatshi uitamueu ka atusselitsh nite ka kanuelimakanitau auassatsh uipatsh tshi utinakanitsh e utshepishtakanitsh aituna etshi uluitishinakanit nite uitshuahtsh utakushitsh tshetshi milu-uitsheuakanit ne auass uesh nekatelitam^u.
 - Miam ume kupaniesh tshipatshi tapuatam^u ilnu-auass 10 ka itatupipuneshit unatukuhi-mashinaikan at peikuan eka tapuelitamilitsh ukau, utau katshi tshitshue matshipalahitutau kie e kushpinelitanilitsh ilnu-auass utilniun.
 - Miam ume kupaniesh tshipatshi natuelitam^u tshi tapuatak ukau unatukuhi-mashinaikan ne ilnu-auass at peikuan eka tapuetak ne ukauimau etshi matshi-tutuakanit ne ilnu-auass. Tshek kupaniesh ui tapuatak unatukuhi-mashinaikan ne ukauimau kie ui akunitshepalitat passe mashinaikana takuanilu tshi natuelitak nitetshe Upishtikuau-tipashkunikan, ka auassiutau tipashkunikan .

AIMUNA KA ATSHITASHUNASHTETSH 16
KUTAKA TIPAHIKANA KA MISHTA-APITELITAKUATSH TSHE NASHEKANITSH

- Ume ka atshitashunashtetsh 16 uitam^u e mitshekau tipahikana ka mishta-apitelitakuatsh tshi nashekanitsh tshi pitutepalitsh ne tipelitamun miam atusseun-natuelitamuna, tan tshipa eish uitishiuanu nitetshe mitshuap ka auassitau ka uitishakanitau, ashitsh kutakatsh ilnuatsh, tshipatshi mashinatahutishunanu nishtutatun mashinaikan ashitsh kutaka atusseutshuapa kie ish apitelitakunilitsh ka uitishiuetau utsh tipelitamun tshi tipelimitishutau kie kuishk tshe atussetau.
- Tshek ma ilnu-auass ushumut nite e apit makie nitetshe ka kanuelimakanit kupaniesh e kushpinelimat nelu auass tshipatshi natuelitam^u nitetshe Upishtikuaiu-tipashkunikan, ka uassiutau tipashkunikan tshi milakanit mashinakanuian tshi natuapamakanit ne auass kie tshi milu-nanakatishakanit kie tshi tutakanitsh tshi miluelimut.
- Tshek ma ilnu-auass e kanuelimakanit nitetshe mitshuapihtsh ka auassitau ka uitishakanitau tshipatshi atshishekahikanilu ukatshipahikanishimuau makie ne ilnu-auass tshipatshi itutahakanu netetshe mishta-uauitishiun (nite ka atshishekahikanitsh ishkuatem, ilnu-auass apu tshi uluit) tshetshi milu-tutuakanit. Ume e aititanuatsh apu shuk utinakanitsh muk nanikutin takuan tshi tutakanitsh tshetshi ilnu-auass milu-kanuelimakanit. Tshek ne ishpalitsh :
 - ✓ Ka uashtenamatshetau tshika mamu-atusseuatsh ashitsh ka atussetau nite ne mitshuap;
 - ✓ Tshek ma ilnu-auass 14 ka itatupipuneshit makie etatu ka tshishelniut makie uikau, utau makie Ka nitautshinat auass eka tapuetakau e aititanuatsh tshipatshi natuelitamueuatsh Kaishpitelimakanitau.
- Ui tapuetuakanit auen, tshipatshi muk uitamuakanu nelu ka natuelitak. Apu takuatsh tshi mashinatahutishit.
- Mishta-apitelitakuan Ka uashtenamatshetau, Kaishpitelimakanitau kie Kananakatshitat mishue tshi ish tipelimitishutau. Takuanilu tshetshi eka tshekualu uitakau.
- Ka uashtenamatshetau tshipatshi tutamuatsh tshi uitsh-atussematutau ashitsh kutaka atusseutshuapa tshetshi milakanitau Pekuakamiulnuatsh mishta-milu-atusseun.
- Ui mishkutshitakanitsh tipelitamun, takuan tshi nashekanitsh ume :
 - a) ui mishkutshitakanitsh tipelitamun, takuan tshi akutakanitsh mashinakanuian kassinu auen tshi uapatak;
 - b) tshika nanitu tshisselimakanuatsh ilnuatsh e ui ish mishkutshitakanitsh tipelitamun;
 - c) Katakuhimatsheta uiluuu tshika mashinatahamuatsh e tapuetakau eish mishkutshitakanitsh tipelitamun katshi nanitu tshisselimakanitau ilnuatsh.

**AIMUNA KA ATSHITASHUNASHTETSH 17
TIPAHIKANA ESHK^u
EKA TAPUETAKANITSH TIPELITAMUN**

- Ume ka atshitashunashtetsh 17 uitam^u passe tipahikana ume anutshish eish tipelimakanit auass kie *Uashteshkuau Tipelitamun*.
- Kassinu mashinaikana atusseun ka eish tipelimakanitau auassatsh («DPJ» Saguenay-Lac-Saint-Jean ka apitau) Ka uashtenamatshetau tshika milakanuatsh. DPJ aishkatsh tshika tipaham^u mashinaikana. Ka uashtenamatshetau ashitsh Ka tshisheuatishitau tshika tshi atshishtauatsh.
- DPJ tshika tshipahamuatsh kassinu mashinaikana (ka itutakanitsh nite Upishtikuiiau-tipashkunikan, ka auassitau tipashkunikan) kie Ka uashtenamatshetau tshika milakanuatsh. Ka uashtenamatshetau ashitsh Ka tshisheuatishitau tshika tshi atshishtauatsh
- Tatura utinakanitsh aimun tshe miluetau mashinaikana tshika milu-atusseshtuakanu ilnu-auass kie tshika nashekanu milu-atusseun, ashpitishimuna, uelutishiuna mak tipelitamuna e itashtesh nite *Uashteshkuau Tipelitamun*.
- Ne tshishik^u katshi tapuetakau Katakuhimatsheta tshe pimipalitatau tipelitamun.
 - Miam ume, Peikuakami-peikutenu ka tatau Uashatsh eshk^u iapitsh DPJ atusseshtaku. Ilnu-auass ka alakanit Uashahtsh ashitsh Ka uitsheuat auass. Ka uashtenamatshetau katshi kashtinakau auass umashinaikan tapuatamuatsh kie mamuhituatsh ashitsh Ka tshisheuatishitau. Ka tshisheuatishitau uiluau tshipatshi tapuetamuatsh tan tshe eish uitishakanit ilnu-auass. Tshipatshi ishinakuan ilnu-auass tshi uitapamat Ka uitsheuat auass makie tshi tat ashitsh ukau, utau makie ashitsh Ka shuelimat auass, muk tan tshe ishpalitau uiluau.